



GAST MANUFACTURING, INC.
A Unit of IDEX Corporation
Post Office Box 97
Benton Harbor, Michigan
Ph: 269/926-6171
Fax: 269/925-8288

PART NUMBER:

LTD160

REV.

C

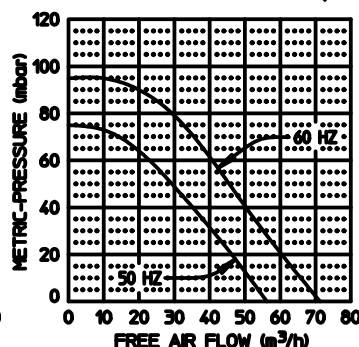
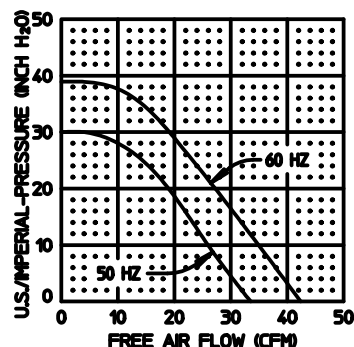
Product Specifications

MODEL NUMBER	MOTOR SPECIFICATIONS	RPM	MAX VAC		MAX PRESS		HP	kW	NET WT.	
			"H ₂ O	mbar	"H ₂ O	mbar			lbs.	kg
R2303A	190-220/380-415-50-3	2850	25	62	30	75	1/5	0,15	23	10,4
	208-230/460-60-3	3450	35	87	39	97	1/3	0,25		

SOUND LEVEL 63/59 dB(A) MAX. @ 60/50 Hz
NORMAL AMBIENT -29°C TO 40°C
RELATIVE HUMIDITY 0% - 100% NON CONDENSING
ENVIRONMENT CLEAN DUST FREE

TECHNICAL DATA SUBJECT TO
CHANGE WITHOUT NOTICE.

Product Performance (Metric U.S. Imperial)



PERFORMANCE DATA

THE PERFORMANCE DATA SHOWN WAS DETERMINED
UNDER THE FOLLOWING CONDITIONS:

LINE VOLTAGE @ 60 Hz. 230V OR 460V FOR 3 PHASE
UNITS. 115V OR 230V FOR 1 PHASE UNITS.

LINE VOLTAGE @ 50 Hz. 220V FOR 3 PHASE OR 1
PHASE UNITS.

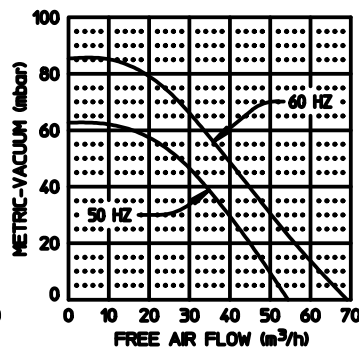
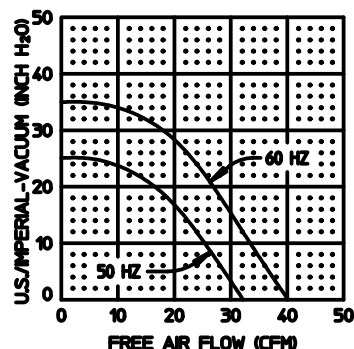
UNITS IN A TEMPERATURE STABLE CONDITION.

DELIVERY MEASUREMENTS MADE WITH OUTPUT PORT
THROTTLED.

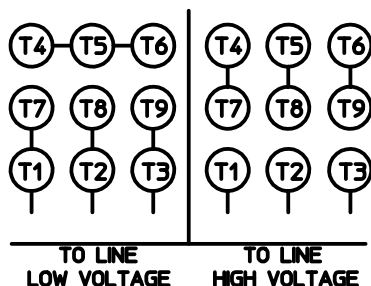
SUCTION MEASUREMENTS MADE WITH INPUT PORT
THROTTLED.

TEST CONDITIONS: INLET AIR DENSITY @ 0.075 lbs. per
cu. ft. [20°C (68°F), 29.92" Hg (14.7 PSIA)].

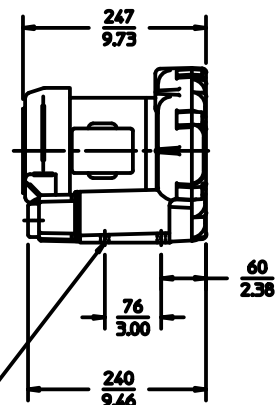
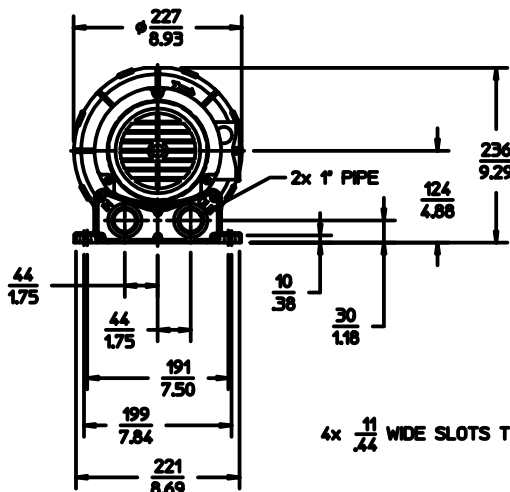
NORMAL PERFORMANCE VARIATIONS ON THE RESISTANCE
CURVE WITHIN ±10% OF SUPPLIED DATA CAN BE EXPECTED.



Product Dimensions Metric (mm) / U.S. Imperial (inches)



WIRING DIAGRAM



4x $\frac{11}{44}$ WIDE SLOTS THRU