

Quick Start Guide

87R Riser-Mount Dry Pipe Sprinkler Compressor

⚠️ WARNING: Please read the O&M manual completely before installing and using the product. Save this guide and the O&M manual for future reference.

Items provided in the box

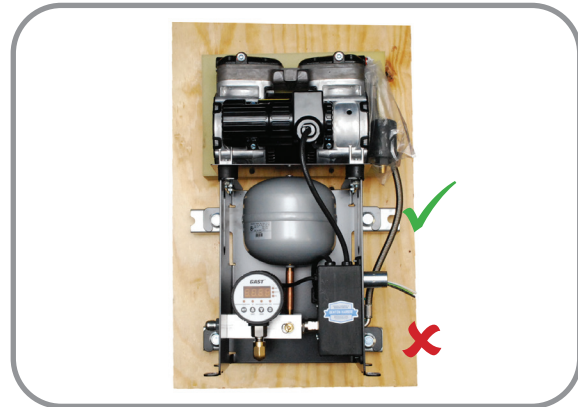
- Riser Mount System • Operating Manual • 24" long Hose Whip
- [2] Unistrut sections
- 2", 2-1/2", 3", & 4" Pipe Clamps with bolts/nuts [2 sets of each]

Additional / Recommended parts for install

- 2x4's and wall anchors (if wall mounting)
- Additional anchors & vibration isolation pads (if floor mounting), consult Factory for additional parts

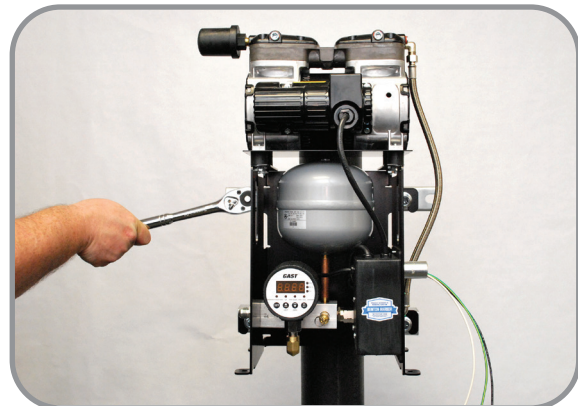
Recommended tools for install

- 3/4" Socket & Wrench • 1/2" Wrench • Phillips-Head Screwdriver
- 9/16" Wrench • Channel Locks &/or Adjustable Wrench



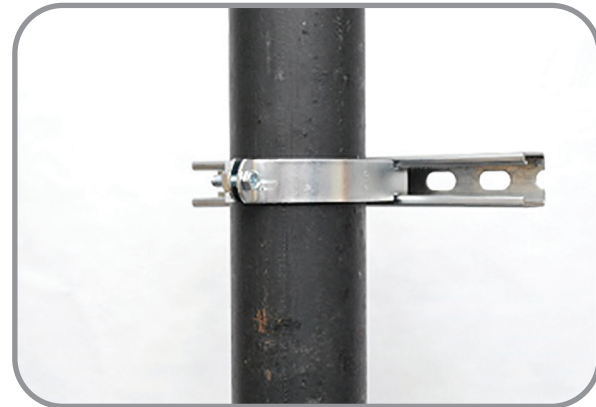
1 Unpack the System.

- Remove only the two bolts holding the top Unistrut to the plywood using a 1/2" socket or wrench. DO NOT remove the 2 bottom bolts.
- The lower Unistrut is pre-installed on the compressor frame and simplifies the mounting process.



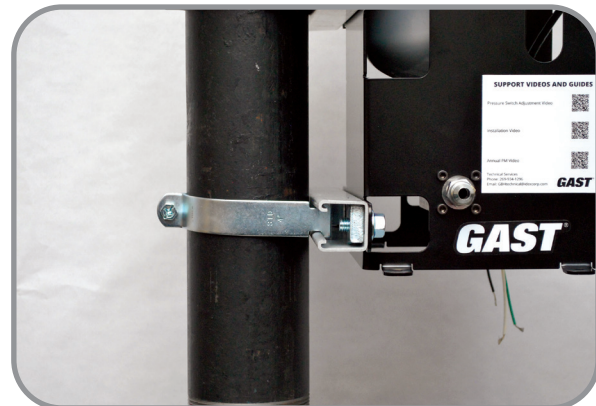
5 Tighten Frame Bolts.

- Using a 3/4" socket or wrench, tighten both bolts.
- Confirm the frame is securely attached to the Unistrut.



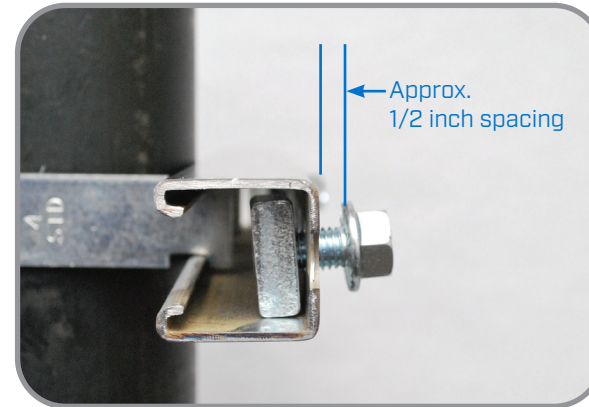
2 Begin Installation.

- Remove the top Unistrut from inside the packaging.
- Install using the proper sized clamps for the riser pipe diameter.
- 2", 2-1/2", 3", and 4" clamps are included with every unit.
- Use appropriate socket & channel locks/adjustable wrench to secure clamp bolt & nut [2", 2-1/2", & 3" = 1/2" & 4" = 9/16"].



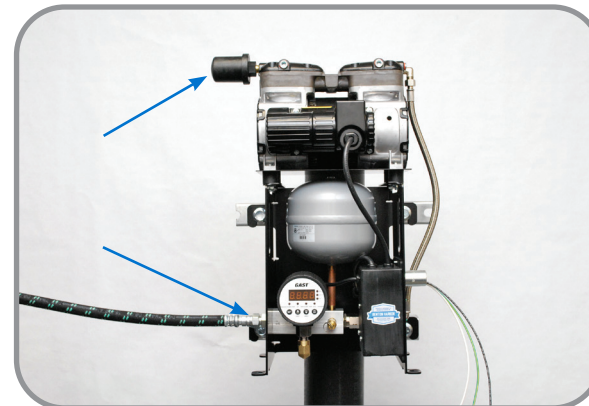
6 Install Bottom Pipe Clamps.

- Slide the bottom pipe clamps into the Unistrut already attached to the system.
- Use appropriate socket & channel locks/adjustable wrench to secure clamp bolt & nut.



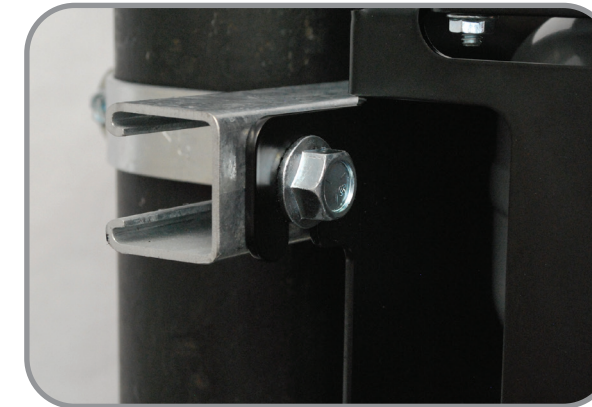
3 Install Bolts and Square Nuts.

- Install [2] bolts & square nuts on the ends of the top Unistrut.
- Ensure there is enough space between the bolt head and Unistrut to allow the system frame to mount in-between.



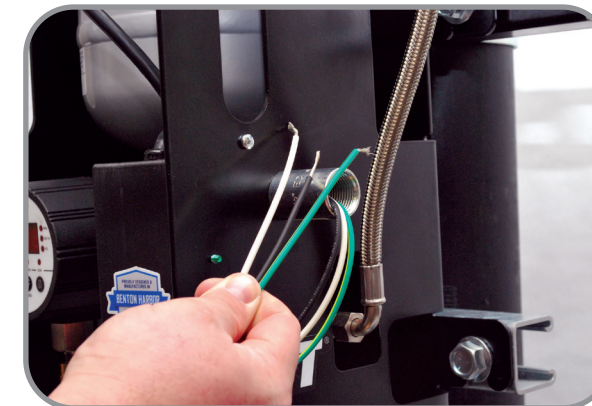
7 Attach Hose Whip and Intake Filter.

- If using, attach the supplied hose whip to the 3/4" threaded outlet.
- Secure flange nut on hose whip using adjustable wrench.
- Remove blue plug from the compressor head port, and install the filter, hand tightening.



4 Hang the Frame.

- Grasping the system by the hand cutouts, carefully hang the frame on the Unistrut.
- Ensure both tabs on the frame are secured between the bolt heads and Unistrut.



8 Complete Installation.

- Complete the installation by having a certified electrician make the electrical connection.
- Once finished, turn the system on and ensure it pressurizes the system and turns off once pressure setting is reached.
- If needed, the pressure switch can be adjusted using the provided instructions*

ADJUSTING THE PRESSURE SWITCH

*Ensure you are looking directly at the indicator lights to verify you are on the proper setting.



1. Press and release the ON/OFF (A) button to place the pressure switch in standby mode. The Run light (B) will no longer be illuminated.



2. Press and release the SET button (C). After releasing the SET button the display will blink and then show the current cut-in (on) pressure setting. The DOWN (D) light will

illuminate to indicate you are changing the cut-in (on) pressure. Use the UNIT button (E) to adjust the pressure setting up and the ZERO button (F) to adjust the pressure setting down. Once the desired cut-in (on) pressure is reached, press the SET button to change the cut-out (off) pressure. (NOTE: If cut-out (off) pressure does not need to be changed, press the SET button (C) one more time and skip to step 4.



3. The UP (G) light will illuminate to indicate you are changing the cut-out (off) pressure. Use the UNIT button (E) to adjust the pressure setting up and the ZERO button (F) to adjust the pressure setting down. Once the desired cut-out (off) pressure is reached, press the SET button (C) to save the changes.



4. Finally, press and release the ON/OFF button (A) to return the unit to RUN mode. **ENSURE THE RUN LIGHT (B) IS ILLUMINATED.**