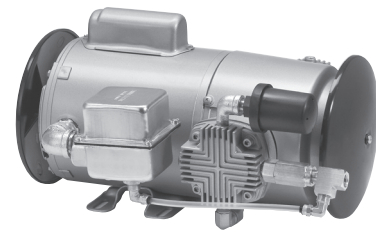


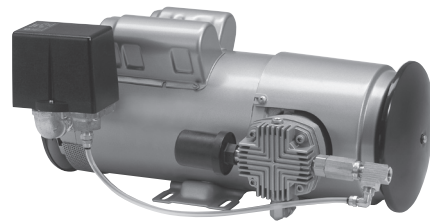


UL Listed Oilless Piston Air Compressors for Dry Sprinkler Systems

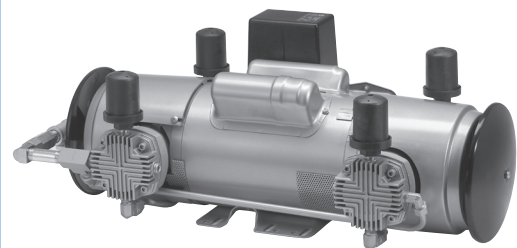
Tankless / Tank Mounted



4LCB-55S-M450GX



6LCF-46S-M616NEX



7LDE-46S-M750X



4LCB-46T-M450GX

- UL1450 Listed
- No lubrication required
- Fully automatic
- Direct Drive
- Corrosion resistant internal parts
- Compact, easy to install
- High cycle rating pressure switch

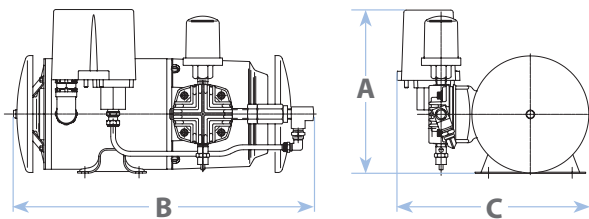
Gast Oilless Piston Air Compressors

All air compressors shown have open motors. Single phase motors have internal thermal protection. Dual voltage motors are shipped pre-wired for the higher voltage. All tank units are wired for 115 volts.

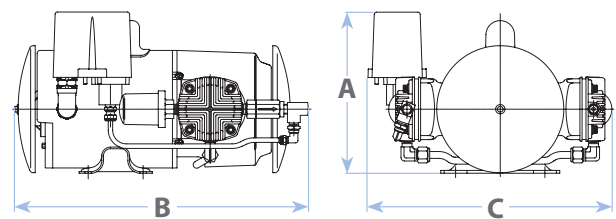
Tankless Units

Tankless / Automatic air compressors have inlet filters, a safety valve, pressure switch, check valve, tubing and fittings.

SINGLE CYLINDER MODEL



TWIN CYLINDER MODEL



For low pressure air maintenance devices

MODEL NUMBER	Maximum Gallons in System to Pump to 18 PSI in 30 Min. In support of NFPA Standard 13	FREE AIR FLOW at 13 PSI CFM	POWER RATING HP	OPERATING VOLTAGE FREQUENCY HZ	DIMENSIONS INCHES			PIPE SIZE IN. NPT	SHIP WT. LBS
					A	B	C		
					1LAA-55S-M100GX	250	1.0		
3LEM-55S-M345EX	480	1.5	1/3	115-60-1	7.67	14.81	9.37	1/4	29.7
4LCB-55S-M450GX	730	2.0	1/2	115-60-1	6.05	16.09	13.29	1/4	40.0

Factory setting: cut-in 13 psi ± 2 psi / cut-out 18 psi ± 2 psi

For Dry Sprinkler systems

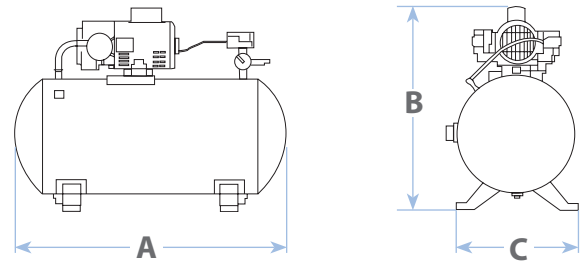
MODEL NUMBER	Maximum Gallons in System to Pump to 40 PSI in 30 Min. In support of NFPA Standard 13	FREE AIR FLOW at 40 PSI CFM	POWER RATING HP	OPERATING VOLTAGE FREQUENCY HZ	DIMENSIONS INCHES			PIPE SIZE IN. NPT	SHIP WT. LBS
					A	B	C		
					1LAA-46S-M100GX	90	1.0		
2LAF-46S-M200EX	150	1.5	1/4	115-60-1	8.31	15.59	9.75	1/4	24.2
3LBA-46S-M300GX	180	2.0	1/3	115-60-1	8.31	15.55	12.35	1/4	30.2
3LEM-46S-M345EX	180	2.0	1/3	115-60-1	9.63	14.81	9.37	1/4	29.2
4LCB-46S-M450GX	300	3.1	1/2	115/230-60-1	8.81	16.09	13.32	1/4	39.5
5LCA-46S-M550GX	400	4.2	3/4	115/230-60-1	8.81	16.96	13.37	1/4	47.5
6LCF-46S-M616NEX	600	5.9	1	115/208-230-60-1	8.79	18.91	13.43	3/8	55.2
7LDE-46S-M750X	800	7.9	1 1/2	115/230-110/220-60-1	9.80	25.25	12.50	3/8	73.0
8LDF-46S-M850X	1000	8.84	2	115/230-50/60-1	9.80	25.90	12.60	3/8	90.0

Factory setting: cut-in 40 psi ± 2 psi / cut-out 50 psi ± 2 psi

Tank Units

ASME Coded Tank Packages

Tank mounted compressors include gauge, pressure switch, shut off valve, drain valve, check valve and safety valve. All tank units are wired for 115 volts.



For Dry Sprinkler systems

MODEL NUMBER	Maximum Gallons in System to Pump to 40 PSI in 30 Min. In support of NFPA Standard 13	FREE AIR FLOW at 40 PSI CFM	POWER RATING HP	OPERATING VOLTAGE FREQUENCY HZ	DIMENSIONS INCHES			PIPE SIZE IN. NPT	SHIP WT. LBS	TANK SIZE GALLON
					A	B	C			
1LAA-46T-M100GX	90	1.0	1/6	115-60-1	19	18	9	1/4	44	2
2LAF-46T-M200EX	150	1.5	1/4	115-60-1	26	21	13	1/4	78	12
3LBA-46T-M300GX	180	2.0	1/3	115-60-1	26	21	13	1/4	80	12
3LEM-46T-M345EX	180	2.0	1/3	115-60-1	26	21	13	1/4	83	12
4LCB-46T-M450GX	300	3.1	1/2	115/230-60-1	33	26	17	1/4	109	20
5LCA-46T-M550GX	400	4.2	3/4	115/230-60-1	33	26	17	1/4	115	20
6LCF-46T-M616NEX	600	5.9	1	115/208-230-60-1	33	25.5	17	1/4	169	30
7LDE-46T-M750X	800	7.9	1 1/2	115/230-110/220-60-1	38	28.6	18	3/8	185	30
8LDF-46T-M850X	1000	8.84	2	115/230-50/60-1	38	29.1	18	3/8	200	30

Factory setting: cut-in 30 psi ± 2 psi/ cut-out 50 psi ± 2 psi

Parts & Accessories

Part Number	Description	Used On (See charts for full model number)		
		55S	46S	46T
AJ550	Check Valve 1/4" NPT female	1LAA-55S 3LEM-55S 4LCB-55S	1LAA-46S 2LAF-46S 3LBA-46S 3LEM-46S 4LCB-46S 5LCA-46S	1LAA-46T 2LAF-46T 3LEM-46T 3LBA-46T 4LCB-46T 5LCA-46T 6LCF-46T
AJ550A	Check Valve 3/8" NPT female		6LCF-46S	7LDE-46T 8LDF-46T
AF631	Shock/isolation mounts 1/4" - 20 thread both ends	1LAA-55S 3LEM-55S	1LAA-46S 2LAF-46S 3LBA-46S 3LEM-46S	1LAA-46T 2LAF-46T 3LBA-46T 3LEM-46T
AF633	Shock/isolation mounts 5/16" - 18 thread both ends	4LCB-55S	4LCB-46S 5LCA-46S 6LCF-46S 7LDE-46S 8LDF-46S	4LCB-46T 5LCA-46T 6LCF-46T 7LDE-46T 8LDF-46T
AK620E	Pressure Switch (cut-in 13 psi, cut-out 18 psi)	All 55S tankless models		
AK620D	Pressure Switch (cut-in 40 psi, cut-out 50 psi)	All 46S tankless models		
AE163F	Pressure Switch (cut-in 30 psi, cut-out 50 psi)	All 46T tank models		
AF634	15" hose assy. 1/4" NPT Fittings	All models with 1/4" NPT Fittings		
AH332	16" hose assy. 3/8" NPT Fittings	All models with 3/8" NPT Fittings		

AT670 AT670A	Compressor Mounting Bracket
<p>For mounting all 55S and 46S tankless models to all shapes and sizes of riser pipes.</p> <p>Comes complete with all the hardware and adjustable stainless steel straps.</p> <p>Contact your local sprinkler supply company or Gast distributor to order.</p>	

System Air Capacity per 1' pipe (Based on actual internal diameter)

Diameter (In.)	1/2	3/4	1	1 1/4	1 1/2	2	2 1/2	3	3 1/2	4	5	6	8
Gallons	.016	.028	.045	.078	.106	.174	.248	.383	.513	.660	1.04	1.50	2.66



GAST Manufacturing, Inc.
A Unit of IDEX Corporation
Post Office Box 97
2300 M-139 Highway
Benton Harbor, Michigan 49023-0097
Phone 269-926-6171
Fax 269-925-8288
www.gastmfg.com

Gast Hong Kong
Unit 12, 21/F, Block B
New Trade Plaza
6, On Ping Street, Shatin
N. T. Hong Kong
Phone 852-2690-1008
Fax 852-2690-1012

GAST GROUP LTD
A Unit of IDEX Corporation
Unit 11, The I O Centre
Nash Road
Redditch, B98 7AS
United Kingdom
Phone +44 (0)1527-504040
Fax +44 (0)1527-525262